

RELIABLE PRODUCTS INTERNATIONAL, LLC

Mercersburg, PA 17236

877-432-8481

www.RockyMountainAirPurifiers.com

FOR YOUR RECORDS

Please record the model and serial number below, for easy reference, in case of loss or theft. These numbers are located on the back panel of your air purifier. Space is also provided for purchase information.

Model number _____

Serial Number _____

Date of Purchase _____

Purchased From _____

ROCKY MOUNTAIN AIR®



SUMMIT™
Model # RMA3500-CHO-T

SUMMIT PLUS™
Model # RMA3500-CHOP-T

USER MANUAL

A Rocky Mountain Air Purifier is more than just a filter... more than a sanitizer... more than a purifier... We combine all of these components into one comprehensive and technologically advanced system which cleans the air of 99.9% of all airborne pollutants.

We hope that you will enjoy your purifier for years to come.



READ ALL INSTRUCTIONS CAREFULLY BEFORE USING THIS PRODUCT.

**PLEASE READ ALL OF THE INFORMATION PROVIDED IN THIS USER MANUAL
BEFORE OPERATING YOUR NEW AIR PURIFIER.**

PURIFIER MUST BE BROUGHT TO ROOM TEMPERATURE PRIOR TO USAGE.
Failure to do so will damage the internal workings of the unit. This damage will not be covered under warranty.

WARNING

This air unit is not a medical device. Do not stop or alter any medical therapy programs or medications without the advice of your physician. Excessive ozone concentrations may cause mucous membrane or respiratory irritation. A rule of thumb is to turn the level of ozone (purify) down or off if the O3 smell is detected.

| | | |
|--|--|--|
|  | <p>CAUTION</p> <p>RISK OF ELECTRICAL SHOCK DO NOT OPEN</p> <p>ATTENTION</p> |  |
| <p>Caution: This unit is not intended for use by persons (including children) with reduced physical, sensory or mental capabilities, or lack of experience and knowledge, unless they have been given supervision concerning use of the unit by a person responsible for their safety. Children should be supervised to ensure that they do not play with the unit.</p> | | |
| <p>This “exclamation point” calls attention to a feature for which you should read the enclosed literature carefully to prevent operating and maintenance problems.</p> | | |
| <p>This “bolt of lightning” indicates that insulated material within your unit may cause an electrical shock. For the safety of everyone, do not remove product covering.</p> | | |

NEVER OPERATE YOUR PURIFIER WITH A BROKEN PLATE.
Doing so will cause damage to the unit. This damage is not covered under warranty.

WHERE TO USE?

- | | | |
|-----------------|-------------------------------|---------------------------------|
| ✓ Kitchens | ✓ Attics & basements | ✓ Doctors' & Veterinary offices |
| ✓ Laundry rooms | ✓ High pollen environments | ✓ Day care centers |
| ✓ Odor clean-up | ✓ New paint & wallpaper areas | ✓ Hospitals & nursing homes |
| ✓ Smoking areas | ✓ New carpet furniture & Room | ✓ Stables & aviaries |
| ✓ Hotel rooms | ✓ Water & fire damaged areas | ✓ Locker rooms |
| | ✓ “Sick” building syndrome | ✓ Restaurants & bars |

SERVICE

First, work through the “Troubleshooting” instructions in this manual. Should you determine that your purifier requires service, please contact your local dealer or the retailer listed on your sales receipt for assistance.

WARRANTY

Reliable Products International, LLC [RPI] gives you the following limited 3-yr warranty for this product to the original owner, when purchased for residential use*, not for resale, from Reliable Products International, LLC or their Authorized Retail Dealer.

RPI will repair or replace, at its discretion, with a new or rebuilt component or part that is found to be defective in material or workmanship within a limited time period based on the date of purchase, model number, and type of use.*

This limited warranty does not cover the replacement of expendable or consumable parts such as filters, plates, UV bulbs, fuses, and other parts subject to normal wear unless they are defective in material or workmanship. Warranty remains in affect provided a normal care and maintenance schedule is adhered to including changing the filters annually with Rocky Mountain Air® replacement filters as stated in the User Manual. RPI's may require proof of purchase from Reliable Products International, LLC or their Authorized Retail Dealer for this product or replacement parts.

This limited warranty does not apply to any part subjected to accident, abuse, neglect, commercial use, alteration, misuse, damage caused by act of God, the use of voltages other than on the data label of this product or service of this product by other than Reliable Products International, LLC or their Authorized Service Center. RPI does not authorize any person or representative to assume or grant any other warranty obligation with the sale of this product.

RPI's liability for damages to you for any costs whatsoever arising out of this statement of limited warranty shall be limited to the amount paid for this product at the time of original purchase, and RPI shall not be liable for any direct, indirect, special, punitive, consequential or incidental damages arising out of the use or inability to use this product.

Some states do not allow the exclusion or limitation of incidental or consequential damages, so the above limitation or exclusion may not apply to you.

All express and implied warranties other than the limited warranty set forth above, for this product, including implied warranties of merchantability and fitness for a particular purpose are expressly denied.

This warranty gives you specific legal rights, and you may also have other rights which vary from state to state.

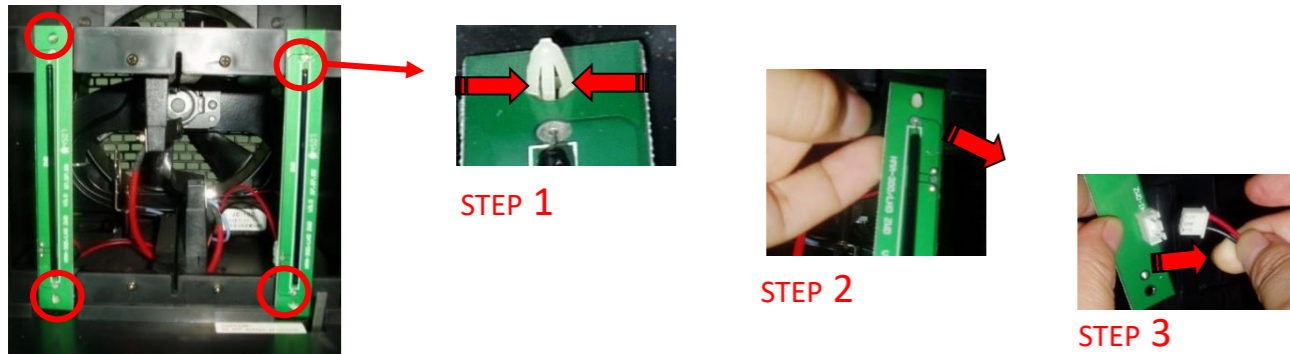
*When used commercially, a one year overall warranty applies.

CAUTION: Unplug purifier to perform maintenance on your unit, including opening the back panel of the unit to clean or replace filters, insert ozone plate, or removing front grill to clean.

REPLACING THE GERMICIDAL UV LAMPS

At the top and bottom of each green, UV circuit board is a white “arrowhead” fastener.

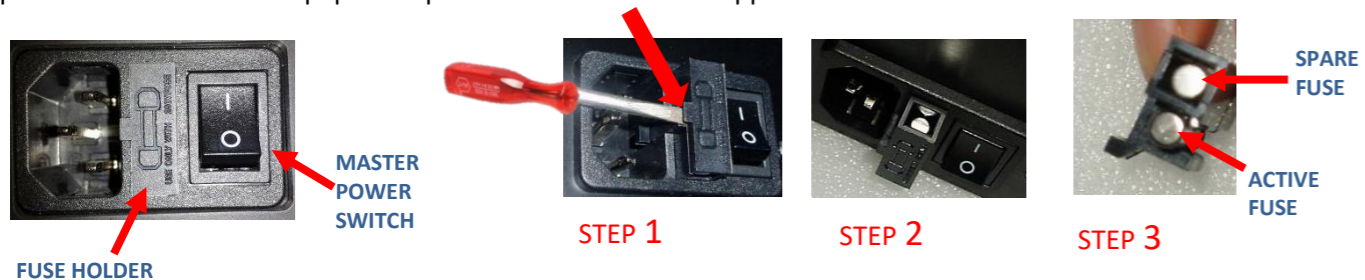
1. Using a pair of needle-nose pliers, tightly pinch the TOP arrowhead wings to make the shape resembling a post.
2. Gently pull the back of the circuit board towards you and off of the TOP arrowhead fastener. Repeat these steps for the BOTTOM arrowhead.
3. Unplug the wire connector from UV board.
4. Plug the wire connector into the new UV board.
5. Line-up the TOP hole with the arrowhead fastener and gently push it through the hole. Repeat step for the BOTTOM hole.



LOCATING AND REPLACING THE FUSE

As a second safety feature, your purifier has a fuse. Please read TROUBLESHOOTING first before proceeding. To check the fuse, locate the fuse holder. The fuse holder is located on the back of the purifier, between the power cord socket and the master power switch. Look for the embossed picture of a fuse.

1. The fuse holder slides out of the unit. Insert the tip of a small flat screw driver into the divot found on the right-hand edge of the power cord socket.
2. Pull and slide fuse holder out of the unit.
3. The spare fuse is enclosed in the square box. The active fuse is held within the clasp. Remove the active fuse and place on a white sheet of paper. Replace fuse if it does NOT appear clear.



INNOVATIVE, CUTTING-EDGE TECHNOLOGY

- ✓ **EXCLUSIVE O₃ TIMER**
Choose from FOUR (4) Presets for a 15 minute burst of freshness to a 120 minutes scrub.
- ✓ **TRIPLE ANION**
Cutting-edge technology triples the effectiveness of removing smoke and particulates.
- ✓ **ADVANCED SLEEP MODE**
Now QUIETS the fan *and* DIMS the Display for a more restful night’s sleep.
- ✓ **NEW EASY TO READ LCD DISPLAY**
Simplified design with touch-button control, and full-functional remote.
- ✓ **INNOVATIVE UV REPOSITIONING**
Greater power to destroy viruses, bacteria, mold, mildew, and VOC’s.
- ✓ **YOU CONTROL THE OZONE**
Choose when to turn ON / OFF the ozone. Choose from FIVE (5) output settings based on sq. ft.
- ✓ **THREE SAFETY FEATURES:** Filter Placement Safety Lever, Master Power Switch, & Fuse.

FREQUENTLY ASKED QUESTIONS

WHERE SHOULD I PLACE THE ROCKY MOUNTAIN AIR® PURIFIER?

The Rocky Mountain Air Purifier should be placed in a room that you spend the most time in or where your issue is found. The unit will perform best when placed further off the floor. The elevated location will better distribute ions and activated oxygen. The Rocky Mountain Air Purifier is easy to move, so try it in a couple of locations until you decide which one works best for your environment.

DOES IT COME READY TO USE?

Just install the O₃ plate (located in separate box packaged inside the carton) and it is ready to use. To install plate, refer to page Quick Start Guide or MAINTENANCE in this manual.

SHOULD I RUN MY PURIFIER 24 HOURS A DAY, 7 DAYS A WEEK?

YES - For best results, you should leave your purifier running to allow the fan to filter and clean the air by drawing it through the unit. We recommend running the STERILE and ANION 24/7.

HOW DOES NATURE PRODUCE OZONE?

Ozone is created electrically during active thunderstorms. The electrical discharge creates a fresh sweet smell. The ultraviolet rays of the sun striking hydrocarbons in our atmosphere also create ozone.

IS OZONE SAFE?

Yes, but it must be used properly. Set the Ozone (O₃) level based on the area to be treated. Use according to the precautions and guidelines found in OPERATION AND SETTINGS instructions. Using the OZONE (O₃) TIMER allows you to SAFELY run the ozone feature for a set period of time and automatically turn off this feature when the time has expired. Before using the Air Purifier, you should read the enclosed instructions carefully.

HOW DOES NATURE PRODUCE IONS?

Waterfalls, lightning, and the waves of the ocean all create negative ions.

THE 7-STAGES OF THE ROCKY MOUNTAIN AIR® PURIFIER

Your Rocky Mountain Air® Purifier Removes, Destroys and Eliminates Particulates, Pollutants and Odors. Here's how...



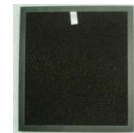
1. **DIRT, DUST & DEBRIS PRE-FILTER:**

This initial stage traps large particles such as hair, dirt, dust and debris. Washable. Replace annually.



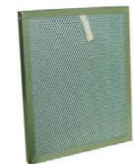
2. **HOSPITAL-GRADE TRUE HEPA FILTER:**

With a filtration rate of 99.7%, it captures microorganisms, bacteria, mold and viruses below 0.03 microns. Washable by immersing in water only. Replace annually.



3. **CARBON FILTER:**

Absorbs odors and draws it within the media. May be wiped or vacuumed with brush attachment. Replace annually.



4. **TiO₂ PHOTO-CATALYTIC FILTER (PCO):**

Activated by the UV lamps, the PCO filter removes airborne bacteria, deactivates viruses, and eliminates VOC's. This Photo-Catalytic Filter oxidizes toxic fumes and breaks substances into odorless carbon dioxide and water. Wipe clean or vacuumed with brush attachment. Replace annually.



5. **DUAL GERMICIDAL ULTRAVIOLET (UV) LAMPS:**

UV mimics the sun's sterilization properties. Artificial UV energy has proven to be 1,600 times more effective than the sterilization effect of the sun in killing viruses, bacteria, mold spores, mildew and other airborne antigens and pathogens. Works in conjunction with the PCO filter. Run 24/7.



6. **OZONE PLATE - ACTIVATED OXYGEN (O₃):**

O₃ oxidizes airborne particulates such as perfumes, cooking odors and cigarette smoke. Converts pollutants to pure oxygen. Plate is washable with 50/50 solution of ammonia & water. See O₃ TIMER Feature.

Never operate your purifier with a broken plate.



7. **ANION - NEGATIVE IONS:**

Produces negatively charged electrical particles that attach themselves to particulates in the air (positive ions), rendering them heavy enough to fall to the ground and out of the air you breathe. Run 24/7.

FOR BEST RESULTS, run the **STERILIZE** feature [activating the UV lamps and PCO filter], **AND** run the **ANION** feature [dropping dust and particles out of the air].

MAINTENANCE

Periodic maintenance of your air purifier is important. A good rule of thumb is to give your unit a "once-over" every 30 to 60 days to ensure continued optimal performance. Replace filters annually.

Disconnect Power Cord From Both Unit And Wall Prior To Performing Any Maintenance Function.

HOW TO CLEAN THE FILTERS

CARBON & PHOTO-CATALYTIC FILTERS:

WIPE with a clean cloth or VACUUM with brush attachment.

PRE-FILTER & HEPA FILTERS:

RINSE with hot water every 3 - 6 months (depending on usage). Air dry. *****Filters MUST BE thoroughly dry before re-installing.**

WARNINGS:

DO NOT USE SOAP OR DETERGENT - This will damage the material and clog the pores of the filters.

DO NOT USE HEAT to rush drying time - This will damage the filters.

HOW TO CLEAN THE OZONE PLATE



Remove the Pre-Filter, the HEPA filter, the Activated Carbon and Photo-Catalytic filters. Carefully remove the white purification plate by grasping the end and carefully pulling straight out of the card slot. Clean the plate with a stiff brush using a 50/50 solution of ammonia and hot water. Rinse plate in warm water.

*****The plate MUST BE thoroughly dry before re-installing.**

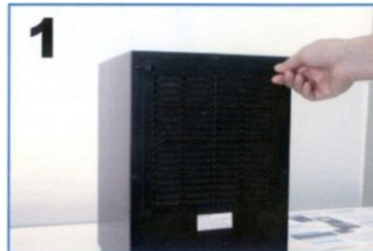
HOW TO CLEAN THE FRONT GRILL & FAN BLADES



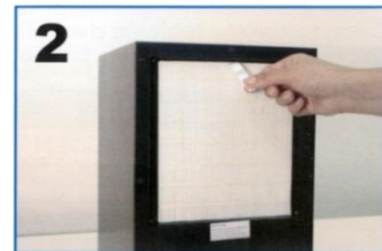
NOTE: It is normal for the ANION to cause some particles to accumulate on the front grill and fan blades.

TO CLEAN, use a Phillips-head screw driver to remove the four (4) screws in the front grill cover. Wipe clean the blades and post. Wipe grill with a damp cloth, vacuum with brush attachment, or immerse in soapy water. **Allow grill and blades to dry thoroughly before re-installing.**

FILTER ORDER



WASHABLE
Dirt, Dust & Debris Pre-Filter



WASHABLE
Hospital-Grade HEPA Filter



CLEANABLE
Carbon Filter



CLEANABLE
Photo-Catalytic Filter

PERIODIC CLEANING & CARE

It is very important to clean and care for your purifier periodically for peak performance.

IMPORTANT: The HEPA, Carbon, PCO and Pre-Filter material must be replaced annually to keep the purifier working properly and to maintain your warranty.

- ✓ **FILTERS:** Filters that appear clean will still have pores “clogged” with micro-organisms, which can only be seen with a microscope. Please see “How to Properly Clean the Filters” section in this manual for specific instructions for each filter.
- ✓ **FRONT GRILL / FAN BLADES:** Due to static electricity, the front grill and fan blades will need to be wiped cleaned periodically throughout the year as well. Please see “How to Clean the Front Grill and Fan Blades” section in this manual for instructions.
- ✓ **ANION NEEDLE:** To clean needlepoint ionizer, first turn **off** and **unplug** from outlet. Remove the front grill. The needlepoint ionizer is positioned in front of the fan. Caution, the needle is very sharp. Take a Q-tip® (cotton swab) dipped in alcohol and clean any dust that may have accumulated on the needlepoint.

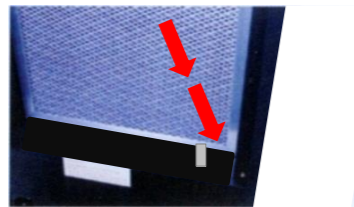
TROUBLESHOOTING

NOTE: Always turn OFF and UNPLUG the unit PRIOR to cleaning or performing maintenance.

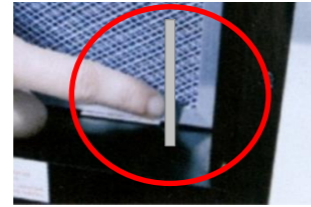
CHECK THE FOLLOWING IF YOU SUSPECT A PROBLEM WITH YOUR UNIT:

- ✓ Is the wall outlet working?
- ✓ Is the unit plugged in properly?
- ✓ Is the master power switch on back of unit turned on?
- ✓ Is the metal PCO Filter Installed properly? **The Purifier will NOT turn ON if filters are inserted Incorrectly.**

SUMMIT Model: Place the PCO filter against the Filter Placement Safety Lever, pushing it away from you and towards the center of the unit. Safety Lever will not be visible when the PCO is properly installed.



CORRECT



NOT CORRECT

- ✓ Is the fuse blown? If yes, see instructions on “How to Replace the Fuse.” Only use a 1 amp fuse, 1.25 inches long.
- ✓ Is the fan hesitating? Clean fan post and blades. Please see “How to Clean the Front Grill and Fan Blades” section.
- ✓ Is ozone being produced when this feature is selected? See “How to Clean the Ozone Plate” section in this manual.
- ✓ Is the plate inserted in the slot receptor properly? Push gently until plate is flush with receiver bracket

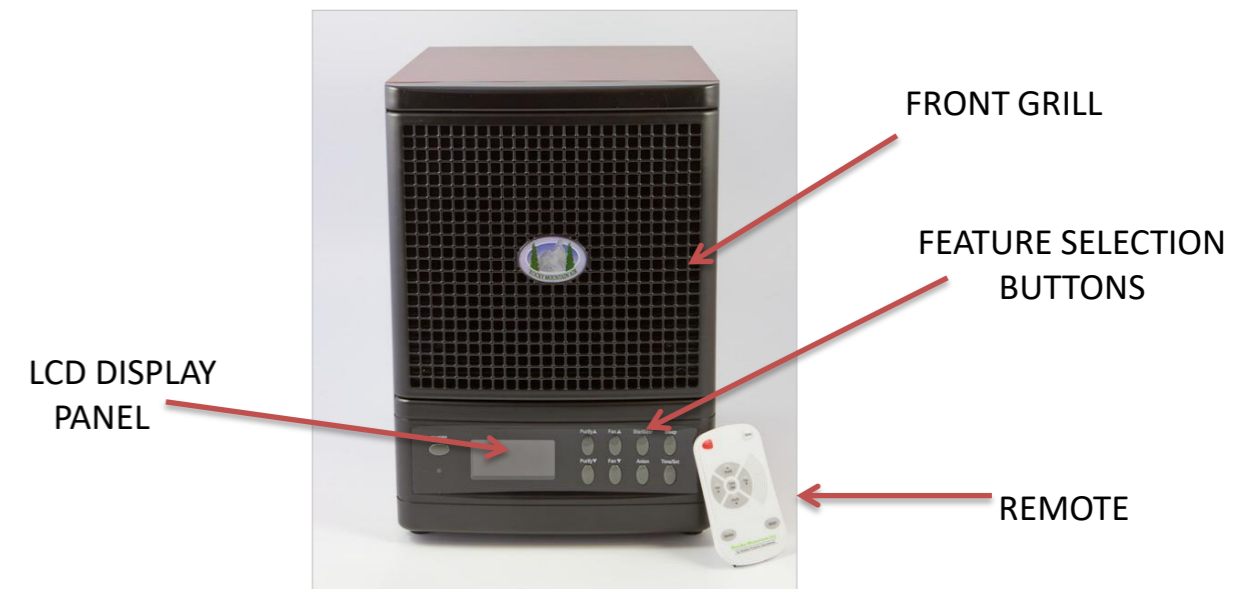
CONTACT YOUR LOCAL DEALER If These Steps Do Not Fix Your Issue Or If Your Issue Is Not Listed Above.

PRECAUTIONS

- ❑ This unit employs a ground type (3 prong) plug which will only fit into a grounding type power outlet. Do not use an adapter. Do not attempt to bypass this feature by altering the plug in any fashion.
- ❑ Do not use outdoors or on wet surfaces.
- ❑ Do not use with damaged cord or plug
- ❑ Do not unplug by pulling on the cord. Grasp the plug, not the cord.
- ❑ Do not operate this unit in areas where flammable or combustible products or vapors may be present.

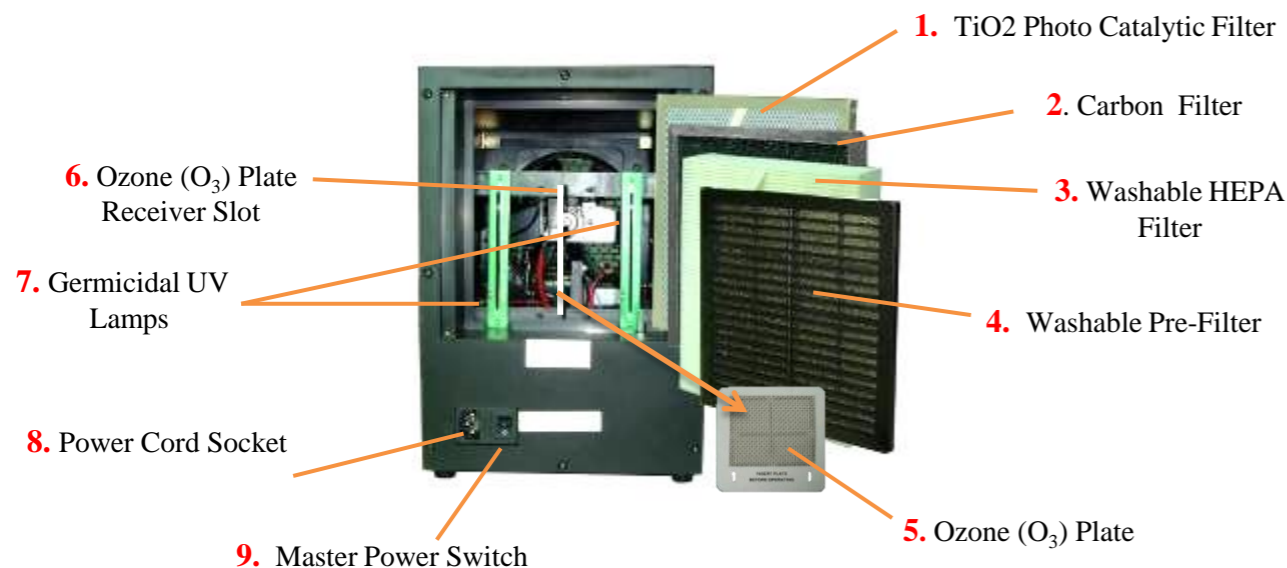
NOTE: Always turn OFF and UNPLUG the unit PRIOR to performing maintenance.

UNDERSTANDING THE AIR PURIFIER - Front View



| PART | FUNCTION |
|--------------------------|---|
| FRONT GRILL | Directs the airflow and protects the fan blades. Unplug before Removing |
| LCD DISPLAY | Indicates the features and levels selected. When ozone (O ₃) timer is set, the count-down timer displays minutes remaining. |
| REMOTE CONTROL | Fully-functional remote controls the air purifier from a distance. |
| FEATURE SELECTION | Allows you to manually control your purifier with a touch of a button. |

UNDERSTANDING THE AIR PURIFIER - Back View



- | | |
|--|--|
| 1. TiO₂ Photo-Catalytic Filter | Photo-catalytic filter is activated by the UV lamps to oxidize volatile organic compounds (VOC's), fumes, and gases. |
| 2 CARBON FILTER | Carbon filter traps odors removing from the air. Filter may be vacuumed with a brush attachment or wiped with a clean cloth. |
| 3 WASHABLE HEPA FILTER | Removes microscopic particulates. To wash or replace, access the HEPA filter by un-screwing the (4) finger screws on the back and removing the pre-filter. |
| 4 WASHABLE PRE-FILTER | Traps large particulates, dust, fur, debris. |
| 5 OZONE (O₃) PLATE | Removable ceramic plate eliminates odors such as cooking odors or smoke. Do not use if broken or has cracks. |
| 6 OZONE RECEIVER SLOT | Allows correct insertion and removal of ceramic plate for cleaning |
| 7 GERMICIDAL UV LAMPS | Dual Germicidal UV, 365µm wavelength. Replaceable. |
| 8 POWER CORD SOCKET | 110 Volt grounded cord (unless otherwise specified). Only use the cord provided with your unit. DO NOT bypass ground wire cord. |
| 9 MASTER POWER SWITCH | Must turn the master power ON to send power to the display and unit. |

As you stand in front of the unit, the ionizer will create a slight charge. If you then touch a metal object there may be a static electric discharge similar to touching a doorknob in Winter.

OPERATION & SETTINGS



- Manually, or with remote control, press the ON/OFF button to turn the unit on.
- Press "FAN ▲" or "FAN ▼" to adjust airflow speed. There are five (5) speeds from which to choose.
- STERILIZE** controls the UV lamps and activates the photo-catalytic filter. When this feature is ON, a soft blue/white glow is visible through the front grill, and the indicator icon on the display screen is lit. Turn this feature ON and OFF by pressing STERILIZE button.
- ANION** controls the dispersal of negative ions. The indicator icon on the front display screen is lit when this feature is ON. Turn this feature ON and OFF by pressing ANION button.
- SLEEP** mode dims the LCD panel to a minimum level **AND** quiets the FAN allowing for a good night's sleep when used in a bedroom setting. May also be used to quiet the fan in other suitable situations. Note, the O₃ feature will not function in SLEEP mode.
- Press "O₃ ▲" or "O₃ ▼" to adjust the level of activated oxygen (O₃). There are five (5) stages. Use the following chart to determine the proper setting for the area to be purified.

| <u>LEVEL</u> | <u>SQUARE FOOTAGE</u> |
|--------------|-----------------------|
| 1 | Up to 500 |
| 2 | 500 to 1000 |
| 3 | 1000 to 1500 |
| 4 | 1500 to 2000 |
| 5 | 2000 to 3500 |

USING THE O₃ TIMER

Perfect for a quick burst of freshness, or to scrub the air for longer periods of time at a higher Ozone setting when you are away.

- SET** the level of Ozone by pressing "O₃ ▲" to select the level of Ozone (O₃). Use the guide above to choose the appropriate stage of ozone for your square footage.
- PRESS** the **O₃ TIMER** to select the length of time you wish the ozone to be produced. The minutes selected will be appear on the display. **Choose from (4) preset times: 15, 30, 60 or 120 minutes.**
- WHEN TIME IS UP**, the purifier will automatically shut-off the O₃ feature allowing all other selected features on the air purifier to continue to run.

- The ozone will normally dissipate in less than an hour after the O₃ is turned off.
- A simple plug-in outlet timer may be used to meet a specific need.